

IC-PCR1500 IC-PCR2500

Control software update information

Thank you for using the Icom Download Service. This guide describes an update to the IC-PCR1500/IC-PCR2500's control software. These descriptions and instructions are based on using Microsoft® Windows® 7. Read the guide carefully before you update the control software.

■ About the control software files

Before updating the control software, download and expand the following compressed file.

- Control software : CD-287901-xxx*.zip
*xxx differs, depending on the version.

■ About preset memory files

Why is the previous “preset_e.mch” (or “preset_e2.mch,” “preset_e3.mch”) file needed?

All previous settings, such as the memory contents, are stored in the “preset_e.mch,” e2.mch and e3.mch files. They are located in the “IC-PCR1500_2500” folder in the DOC folder†, if you have not saved them in a file with a different file name.

The “preset” files (initializing files) will be deleted at the same time the control software uninstallation is performed.

If you want to use the previous “preset” files, move them to any location other than the DOC folder†.

- For Windows 7 and Windows Vista users, see page 3 for details on moving the files.

DOC folder†:
“Document” folder for Windows® 7 and Windows Vista® users, or “My Document” folder for other Windows users.

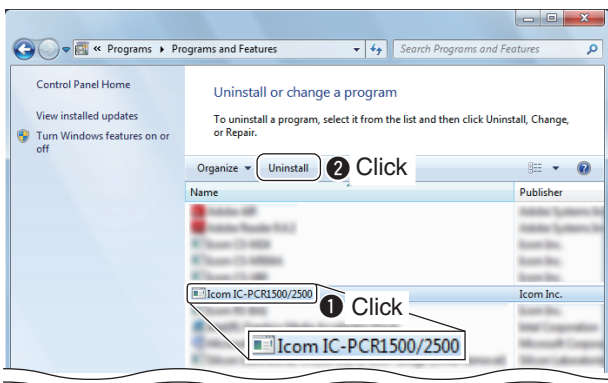
■ Uninstalling the original application

/// The displayed dialog boxes or indications may differ slightly from the following instructions, depending on your system conditions or environment.

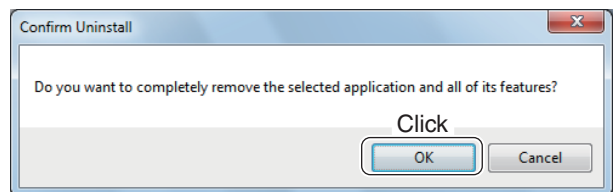
- ① Start Windows, and log on as the administrator.
- ② Select the “Control Panel” in the Start menu.
 - The control panel appears as shown in the next step below.
- ③ Click the “Programs, Uninstall a program” icon.
 - The “Uninstall or Change a program” menu appears.



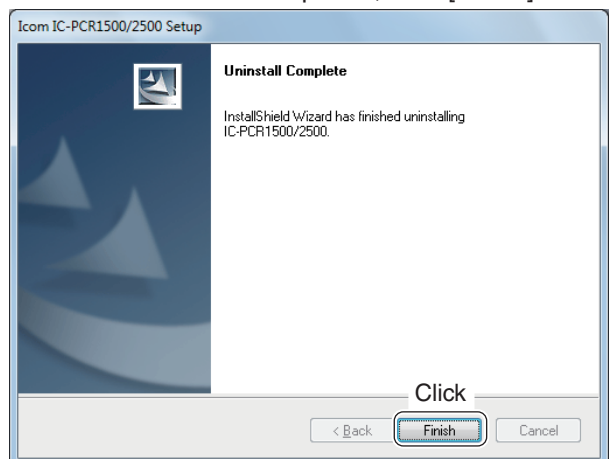
- ④ Click the “Icom IC-PCR1500/2500” icon, then click [Uninstall].



- ⑤ The “Confirm Uninstall” dialog box appears. Click [OK] to start the uninstallation.
 - The uninstallation starts.



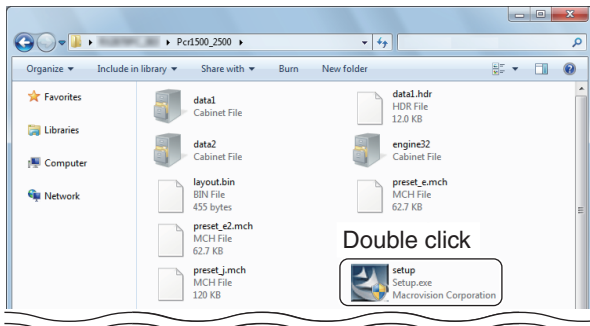
- ⑥ After the uninstall is completed, click [Finish].



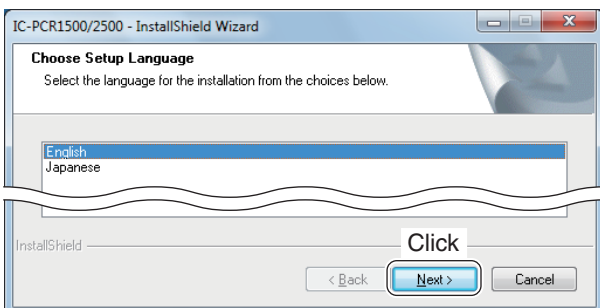
■ Application installation

The displayed dialog boxes or indications may differ slightly from the following instructions, depending on your system conditions or environment.

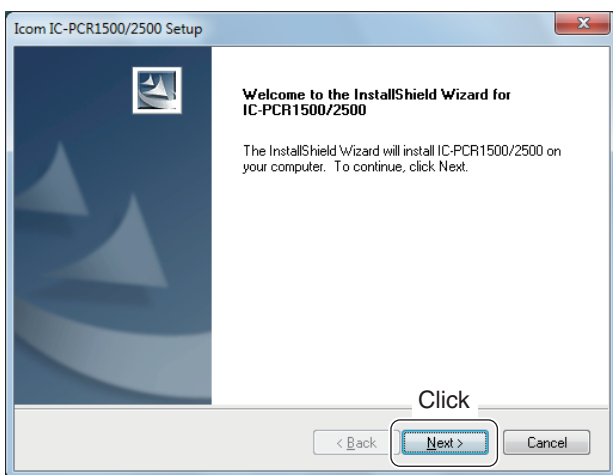
- ① Quit all applications other than Windows.
- ② Double click the “Pcr1500_2500” folder in the “CD-287901-xxx*” folder.
*xxx differs, depending on the version.
• “Driver” and “Pcr1500_2500” folders are included.
- ③ Double click the “Setup.exe” file in the “Pcr1500_2500” folder.



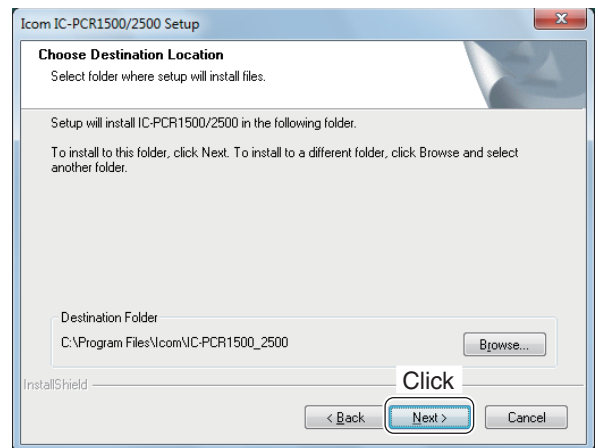
- ④ The “User Account Control” dialog box appears. Click [Yes].
• The “InstallShield® Wizard” starts preparing the installation.
- ⑤ Select “English” or “Japanese” as the desired installation language. Click [Next>].



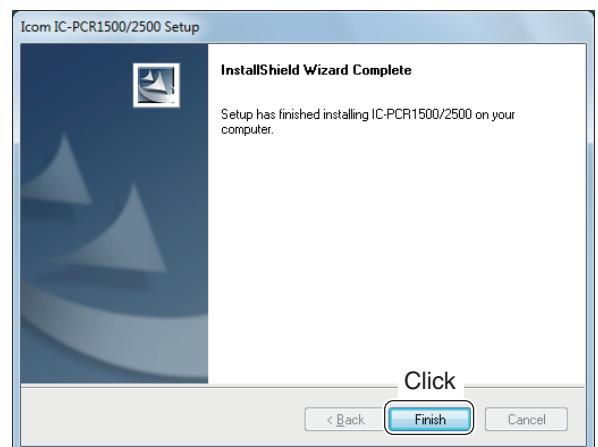
- ⑥ After the InstallShield Wizard finishes preparing the setup, the following dialog box is displayed. Click [Next>].



- ⑦ Confirm the installation location, then click [Next>] to start the installation.
• Click [Browse...] then type the desired location if you are specifying a different installation location, then click [Next>].
• The installation starts.



- ⑧ After the installation is completed, click [Finish].
• The IC-PCR1500_2500 shortcut icon is created on the desktop.

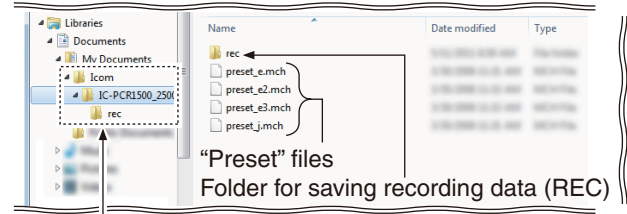


■ About preset memory files

If you moved the “preset” files to a location other than the DOC folder†, move those files back into the “IC-PCR1500_2500” folder in the DOC folder† as follows:

- ① Start up the “IC-PCR1500_2500” program, then after it is fully open, quit the program.
 - The “IC-PCR1500_2500” folder appears in the DOC folder†. The preset files are also automatically copied into the “IC-PCR1500_2500” folder in the DOC folder†.
- ② Move or copy the “preset” files that were moved or backed up into the “IC-PCR1500_2500” folder in the DOC folder†.
- ③ Start up the “IC-PCR1500_2500” program.

- ④ Click the [Memory Edit] icon on the control software’s tool bar.
Click [File] on the menu bar, then open the “preset” files now in the DOC folder†. This will load your previous memory channels into the program.



The “IC-PCR1500_2500” folder is automatically made into the DOC folder† when you start up the “IC-PCR1500_2500” program.

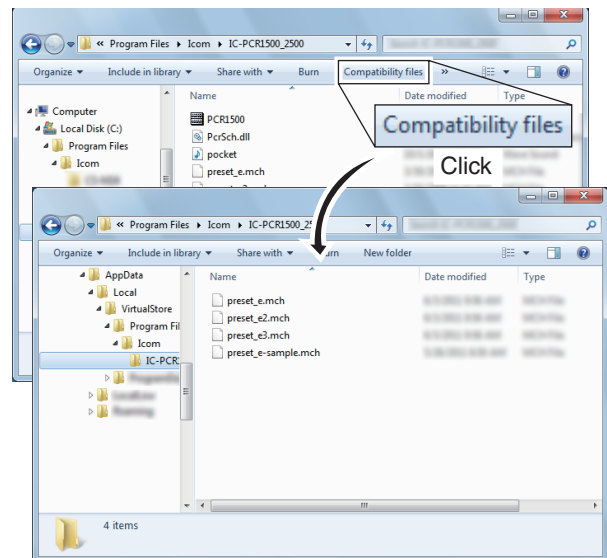
■ Location of the preset file for Windows® 7 and Windows Vista® users

When you save the preset files into the “Program Files” folder or “Windows” folder in the drive that the OS is installed, the files are actually saved into the “VirtualStore” folder.

If you want to move or make a backup of the files using Windows Explorer, do the following steps.

- ① Open the preset file folder by clicking “Computer” or “Windows Explorer.”
 - Example (C:\Program Files\Icom\IC-PCR1500_2500)
- ② If the [Compatibility Files] button appears on Windows Explorer, click it. (If the [Compatibility Files] button does not appear, skip this step.)
When you click the [Compatibility Files] button, Windows Explorer opens up the “VirtualStore” folder where the true preset files are actually stored.

- ③ Move or make a backup of the three “preset” files, stored in the IC-PCR1500_2500 (or IC-PCR1500) folder (inside the “VirtualStore” folder) into a location, other than the DOC folder†.



DOC folder†:

“Document” folder for Windows® 7 and Windows Vista® users, or “My Document” folder for other Windows users.

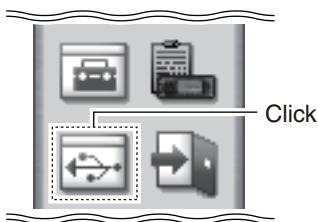
■ New feature for IC-PCR1500/IC-PCR2500

If you update the IC-PCR1500/IC-PCR2500 control software to Ver.2.20, you can set the COM port, Audio and Sampling Rate manually in the “Port setting” dialog box.

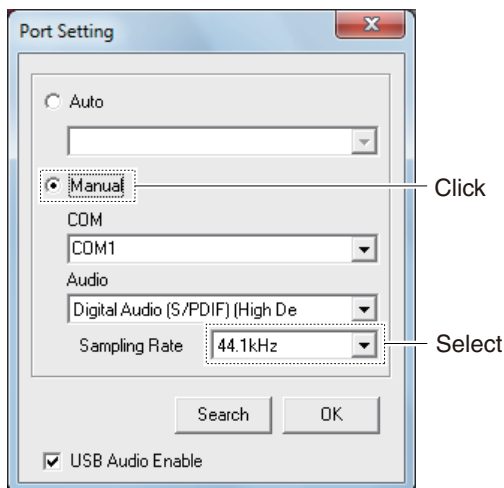
- ① If the control software’s power is ON, click the [Power] icon on the control software’s tool bar to turn it OFF.



- ② Click the [USB] icon, and the “Port Setting” dialog box appears.



- ③ Click the “Manual” radio button, then set “COM,” (COM port) “Audio,” (Audio device) and “Sampling Rate” to your desired values.
 - The Sampling Range selectable values are 44.1 kHz, 22.05 kHz or 11.025 kHz.



- ④ Click [OK] after “COM,” (COM port) “Audio,” (Audio device) and “Sampling Rate” settings are completed.
 - You can control the IC-PCR1500/IC-PCR2500 connected to your COM port.
 - If you click [Search], the control software searches and automatically sets the COM port and Audio device.
 - If you clear the “USB Audio Enable” check box, you cannot set “Audio,” (Audio device) and “Sampling Rate.” You also cannot record a received signal.

◇ NOTICE for recording sampling rate

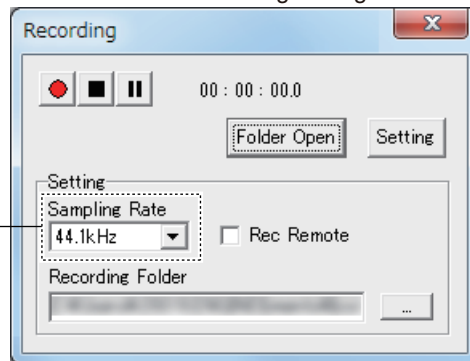
If you set the Sampling Rate to “Manual” in the “Port Setting” dialog box, the receiver’s sampling rate depends on the “Port Setting” dialog box’s “Sampling Rate” setting.

Therefore, even if you set the “Recording” dialog box’s “Sampling Rate” setting to high quality (44.1 kHz), the receiver’s sampling rate will actually be the rate set in the “Port Setting” dialog box.

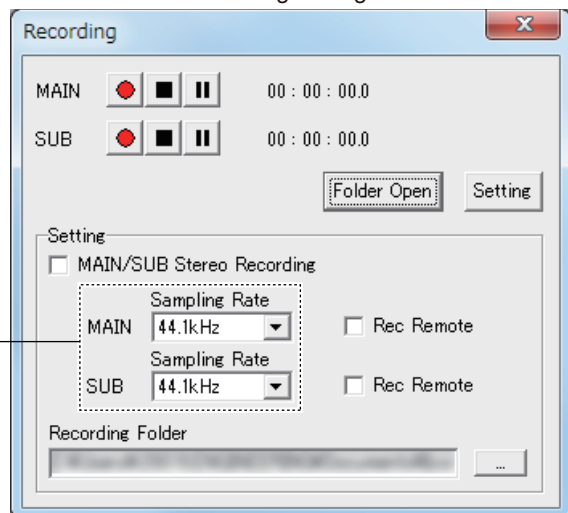
(Example)

- “Port Setting” dialog box sampling rate setting : 11.025 kHz
- “Recording” dialog box sampling rate setting : 44.1 kHz
- The receiver sets the recording sampling rate to 11.025 kHz.

IC-PCR1500’s “Recording” dialog box



IC-PCR2500’s “Recording” dialog box



The signal recording sampling rate depends on the “Port Setting” dialog box’s sampling rate.