

- ◇ This cloning software is designed for data entry, settings, and cloning of the ID-31A/E UHF TRANSCEIVER.
- ◇ The CS-31 has a Help file to describe functions and operation.

## ■ System requirements

To use this cloning software, the following computer systems and items are required:

### • Operating System (OS)

- Microsoft® Windows® XP (32bit)
- Microsoft® Windows Vista® (32/64bit)
- Microsoft® Windows® 7 (32/64bit)

### NOTE:

These instructions are based on using Microsoft® Windows® 7.

### • Others

- Cloning cable + a USB port
- OR
- microSD card + a memory card reader or memory card slot

### <Cloning cable + a USB port>

- Optional OPC-2218LU DATA CABLE
- A USB 1.1 or 2.0 port

### <microSD card + a memory card reader or memory card slot>

- microSD card (purchase separately)
- Memory card reader or Memory card slot to read the microSD card (purchase separately)

## ■ Usable microSD card

A microSD card of up to 2 GB, or a microSDHC of up to 32 GB, can be used with the transceiver.

Icom has checked operation with the following microSD and microSDHC cards.

(As of November 2011)

Brand	Type	Memory size
SanDisk®	microSD	2 GB
	microSDHC	4 GB
		8 GB
		16 GB
		32 GB

Through the rest of this document, the microSD card and a microSDHC card are simply called microSD cards.

## ■ USB driver installation

To use the OPC-2218LU DATA CABLE between the transceiver and the PC, you must install a USB driver. The latest USB driver and installation guide can be downloaded from the Icom website. Please read the guide before installing the driver.

### CAUTION:

- **NEVER** connect the transceiver to the PC with the OPC-2218LU DATA CABLE until the USB driver installation has been completed.
- The driver is not supported by the Windows® automatic recognition system.

Icom, Icom Inc. and the Icom logo are registered trademarks of Icom Incorporated (Japan) in Japan, the United States, the United Kingdom, Germany, France, Spain, Russia and/or other countries.

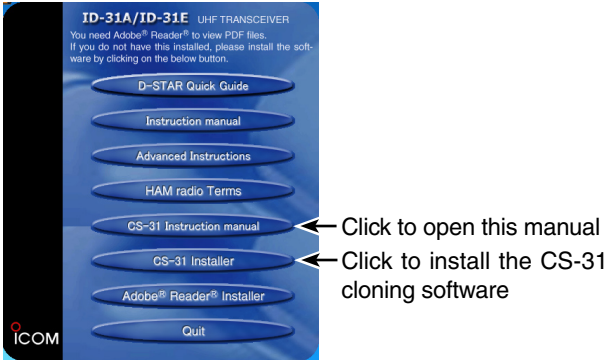
Microsoft, Windows and Windows Vista are registered trademarks of Microsoft Corporation in the United States and/or other countries.

All other products or brands are registered trademarks or trademarks of their respective holders.

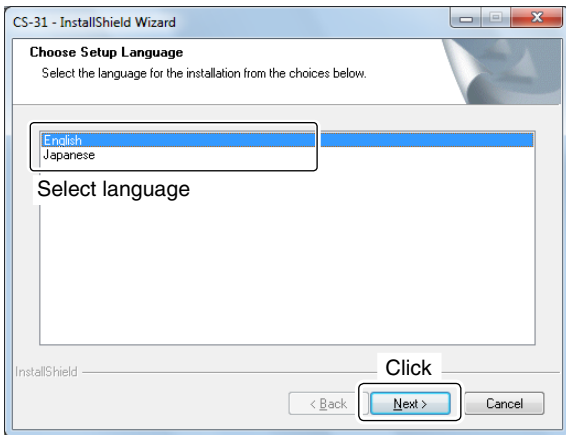
## ■ Software installation

When installing the software, log on as the **administrator**.

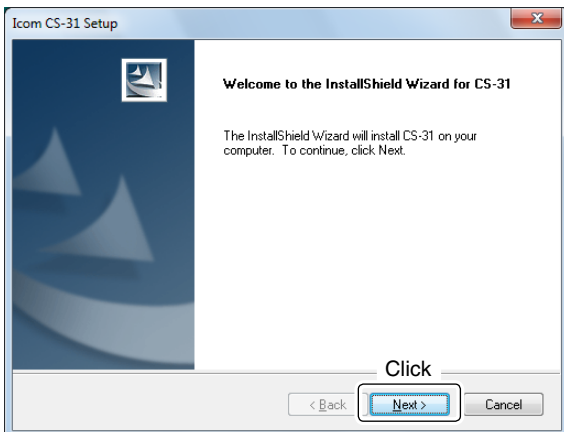
- ① Make sure Windows has completed its start-up, and no other applications are running.
- ② Insert the CD into a CD drive.
- ③ The Auto Run function starts and the main menu appears on the screen.  
 If the main menu does not appear, double-click the "AutoRun.exe" contained in the CD.



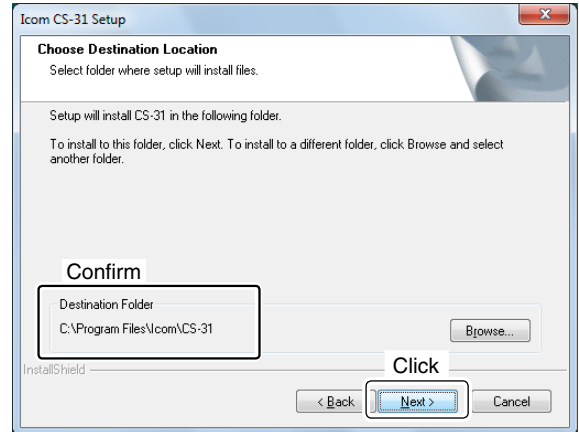
- ④ Click [CS-31 Installer].  
 • If "User Account Control" appears, click [Yes] to continue.
- ⑤ "Choose Setup Language" appears. Select 'English' or 'Japanese,' and then click [Next>].  
 • In this document, the 'English' option is used.



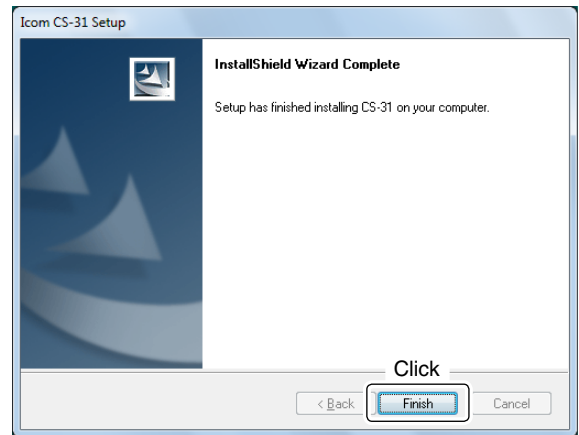
- ⑥ "Welcome to the InstallShield Wizard for CS-31" appears, and then click [Next>].



- ⑦ "Choose Destination Location" appears, and then click [Next>].  
 • If desired, click [Browse...] to select another destination folder before clicking [Next >].



- ⑧ After the installation is completed, "InstallShield Wizard Complete" appears, and then click [Finish].



- ⑨ Click [Quit] on the main menu.
- ⑩ Eject the CD.
- ⑪ A program group 'CS-31' appears on the program menu, and a 'CS-31' shortcut icon appears on the desktop.  
 • You can uninstall the cloning software using "Uninstall a program" in the Windows Control Panel.

Please refer to the Help file of the cloning software for assistance with the functions or settings. To open the Help file, click [Help] in the top menu of the cloning software and select "Contents," or simply push the [F1] key of the PC's keyboard.

## Cloning from a PC using a microSD card

To clone from a PC using a microSD card, follow the steps described below.

**Step 1** Insert a microSD card into your PC's card reader or card slot

**Step 2** Make the initial set up

**Step 3** Cloning (p. 4 of this manual)

### ■ microSD card and a PC connection

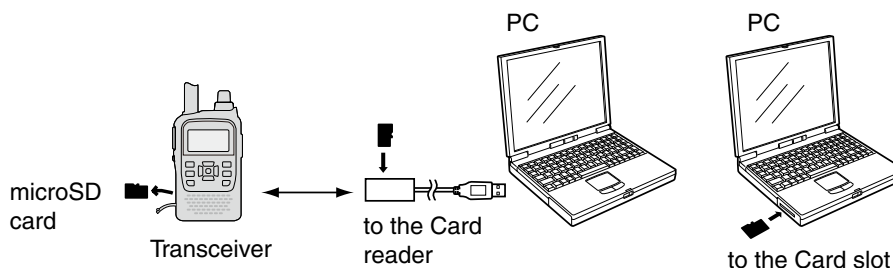
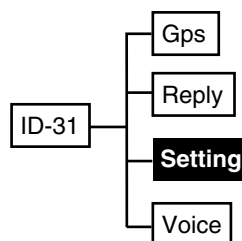
**NOTE:** If you use a brand new microSD card, first format the microSD card. See the PDF type Advanced Instruction for details.

- ① Save the transceiver's settings data in the "icf" file format onto the microSD card. Open the "Setting Save" of the transceiver's MENU screen to save. (MENU > SD card > **Setting Save**)
- ② Turn the power OFF, and remove the microSD card from the transceiver.
- ③ Insert the microSD card in the microSD card slot of the PC or the microSD card reader, as illustrated below.
- ④ Copy the transceiver's setting data (ICF file), stored in the [Setting] folder of the card to a folder on your PC.

#### ◇About the microSD card's folder composition

The folder composition on the microSD card is as shown below.

The transceiver's setting data (ICF file) is stored in the [Setting] folder.

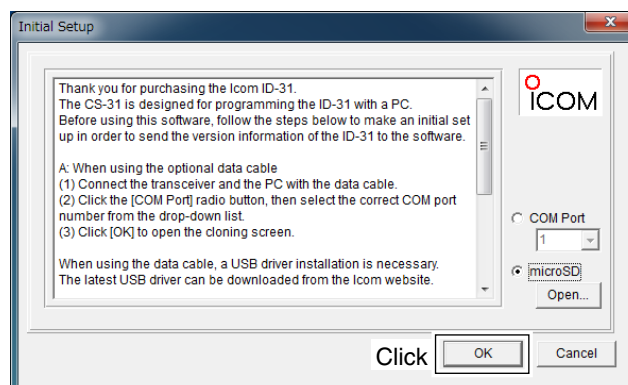


### ■ Initial setup window

Before using this software, read the instructions thoroughly, and follow the steps below to make the initial set up in order to send the transceiver version information.

**NOTE:** When the transceiver version information is not correctly sent to the software, some items may not appear on the software sheets.

- ① Click the [microSD] radio button.
- ② Click [Open...] to show the data file selection screen. Select the ICF file, saved in "microSD card and a PC connection," as described above.
- ③ Click [OK] to read the selected file, and open the cloning screen.



## Cloning from a PC using a microSD card (Continued)

### ■ Programming information

- To prevent data loss, you should first copy the settings data (ICF file) of the card to the PC. After copying, read the data into the cloning software, before editing or entering new parameters into the cloning software.
- Before programming, make a backup file onto your PC. A back-up file allows easy restoring even if the setting data in the microSD card is accidentally deleted.
- Be sure to turn OFF the power before inserting or removing the microSD card.
- **NEVER** remove the microSD card, detach the battery pack/case, or power OFF the transceiver, while reading or writing data to or from the microSD card. It will cause the data to be corrupted or damage the card.

### ■ Cloning operation

To clone the memory channels, MENU item settings and repeater list, set in the CS-31 CLONING SOFTWARE, using a microSD card, follow the steps as described below.

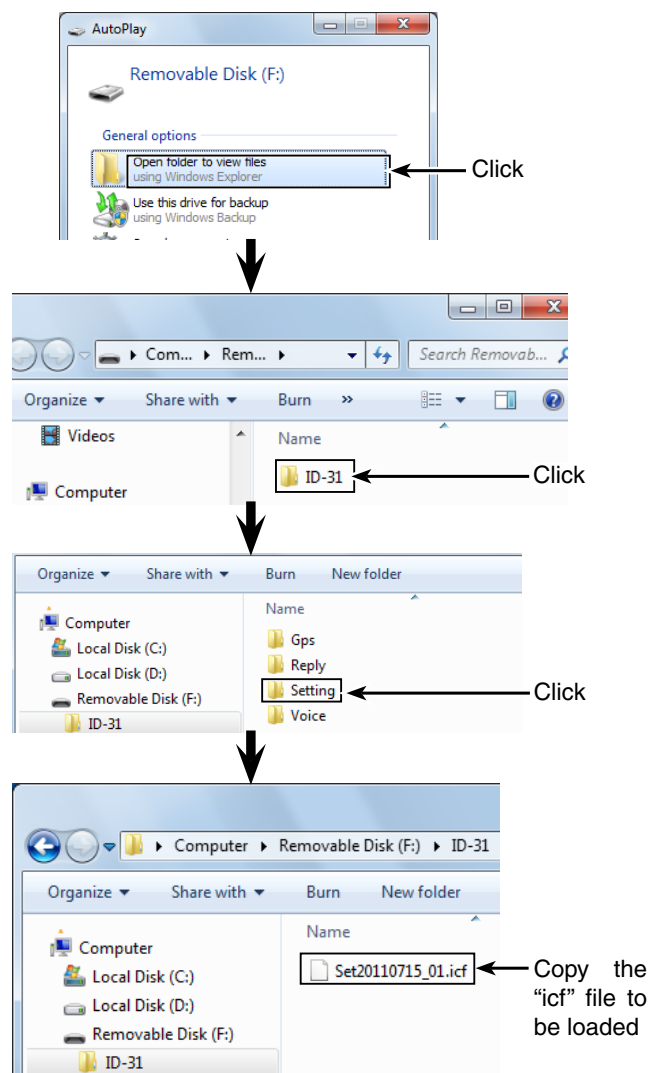
- ① Set the desired memory channels, MENU item settings and the repeater list in the CS-31 CLONING SOFTWARE, and then save them in an “icf” file format in a folder on your PC.
- ② Copy the ICF file into the “Setting” folder in the “ID-31” folder on the microSD card.
- ③ Insert the microSD card that includes the ICF file, then load it to complete the cloning.  
(MENU > SD card > **Setting Load**)

#### NOTE:

- After loading, the contents of the ICF file will be overwrite to the current data.
- The loading contents can be selected between “ALL,” “Except My Station,” and “Repeater List Only.” Select “Repeater List Only” to load only the repeater list into the transceiver.
- The original skip settings in your repeater list can be kept when loading. When “Keep ‘SKIP’ setting in Repeater List?” appears, select “YES” to keep the skip settings in the repeater list.
- See the PDF type Advanced Instructions for details.

- ④ Turn OFF the power, then turn it ON again to operate the transceiver with the loaded data.

#### Copying the ICF file in the PC into the microSD card



## Cloning from a PC using the OPC-2218LU

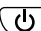
To clone from a PC using an OPC-2218LU cable, follow the steps as described below.

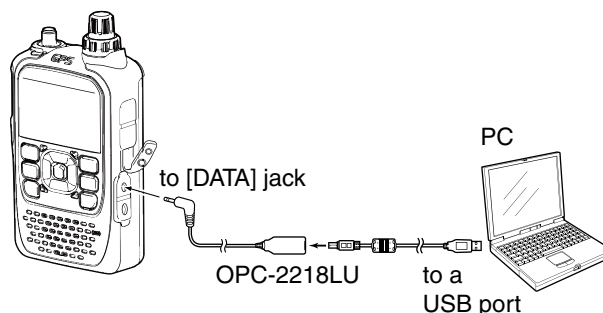
**Step 1** Connect the transceiver and PC using the OPC-2218LU

**Step 2** Make the initial set up

**Step 3** Cloning (p. 6 of this manual)

### ■ Transceiver and a PC connection using the OPC-2218LU cable

- ① Install the USB driver.
  - Download and install the latest OPC-2218LU USB driver from the Icom website.  
See the OPC-2218LU instruction manual for details.
- ② Make sure the transceiver power is OFF.
- ③ Connect the OPC-2218LU as illustrated to the right.
- ④ Push  to turn ON the transceiver.

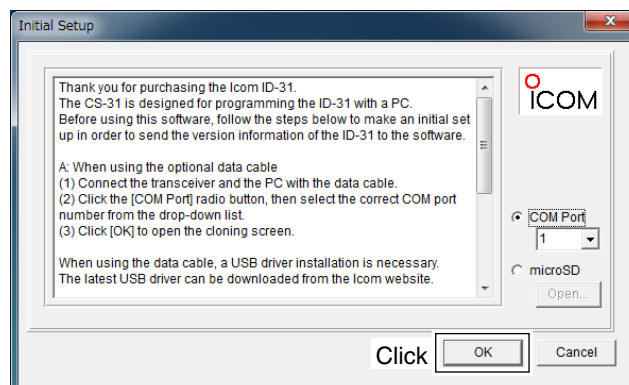


### ■ Initial setup window

Before using this software, read the instructions thoroughly, and follow the steps below to make the initial set up in order to send the version information of the ID-31 to the software.

**NOTE:** When the version information of the transceiver is not correctly sent to the software, some items may not appear on the sheets.

- ① Click the [COM Port] radio button.
- ② Select the correct COM port number from the drop-down list, or directly enter the COM port number into the box.
  - See the “Driver Installation Guide” to confirm the COM port.
- ③ Click [OK] to open the cloning screen.







### ■ Programming information

- To prevent data loss, you should first read (download) all the transceiver's data before entering or editing parameters using the cloning software.
- Before programming, make a backup file onto your PC. A back-up file allows easy restoring even if the setting data in the transceiver is accidentally deleted.
- While reading or writing (uploading) cloning data, **NEVER** turn OFF the transceiver or the PC, and **NEVER** disconnect the OPC-2218LU. Otherwise, the data could be lost or deleted.
- Before reading or writing cloning data, the "DV Data TX" setting of the transceiver must be set to "PTT." Otherwise, when data is input from a PC through the [DATA] jack, the transceiver automatically transmits it.  
(MENU > DV Set > **DV Data TX**)

### ■ Cloning operation

To clone the memory channels, MENU item settings and repeater list using the OPC-2218LU, follow the steps as described below.

- ① Click , or select "Read <- TR" in the [Clone] menu to start reading the data from the transceiver.  
Also, click  or select "Open Ctrl+O" in the [File] menu to open the ICF file to write to the transceiver.
- ② Program functions or settings.
  - See the Help file of the cloning software for assistance.
- ③ Click , or select "Write <- TR" in the [Clone] menu to write the programmed data into your transceiver.  
 **NOTE:** After writing, the programmed data will be overwrite by the current data.
- ④ Turn OFF the power, then turn it ON again to operate the transceiver with the loaded data.

## Latest settings file and repeater list downloading

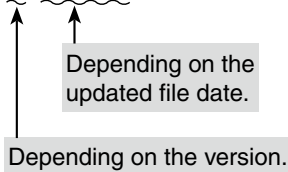
The latest settings file and repeater list can be downloaded from our website.

Access the following URL to download the latest data.  
<http://www.icom.co.jp/world/index.html>

① Decompress the compressed file that is downloaded from our website.

“31\_U\_111201” folder will be created on the same place where the downloaded file is saved.

• **File Name:** 31\_U\_111201.zip



/// This instruction manual describes when the file name is “31\_U\_111201.zip,” for example.

### For your reference:

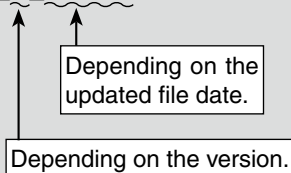
The latest settings file (ICF file) and repeater list (CSV; Comma Separated Values file) are contained in the downloaded ZIP file.

#### <Settings file (ICF file)>

All setting data of the transceiver is stored in the ICF file.

- How to program (See to the right)
- How to clone (See pages 4 and 6 of this manual)

**File Name:** 31\_U\_111201.icf

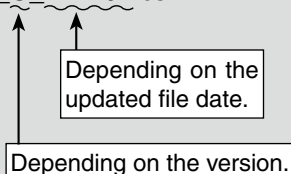


#### <Repeater list (CSV file)>

Repeater list is only stored in the CSV file.

- How to program (See page 9 of this manual)
- How to import (See page 8 of this manual)
- How to export (See page 9 of this manual)

**File Name:** 31\_U\_111201.csv



② Copy the settings file (ICF file) and repeater list (CSV file) contained in the downloaded ZIP file to a folder on your PC.

## Programming the settings file in a ICF format file using the CS-31

This section describes how to program the downloaded settings file (ICF file).

### 1. Settings file (ICF file) editing

Before starting to program, make an initial set up in order to send the version information of the ID-31 to the software. (pp. 3, 5 of this manual)

- ① Click or select “Open Ctrl+O” in the [File] menu of the CS-31 to open the ICF file, saved in “Latest settings file and repeater list downloading” as described to the left.
- ② Program each setting for each function.
  - See the Help file of the cloning software for more details on programming.

### 2. Settings file (ICF file) saving

- Click or select “Save Ctrl+S” or “Save As...” in the [File] menu of the CS-31 to save the edited file (ICF file) to a folder on your PC.

/// See pages 4 and 6 of this manual for about how to write the saved ICF file to the transceiver.

### NOTE:

The ICF (Icom Cloning Format) file, including the default values, can be downloaded from our website.

To reset the settings of the transceiver to the default values, copy the downloaded ICF file to PC local folder, and then write it to the transceiver.


# Importing the repeater list in a CSV format file

Please read this section before importing the repeater list in a Comma Separated Values (CSV) format file to write the repeater information to the transceiver.

## When the OPC-2218LU is used to clone:

The setting contents, except the repeater list, can be retained by doing the following procedures.

### 1. Reading the data from the transceiver

➔ Click , or select “Read <- TR” in the [Clone] menu to start reading the data from the transceiver.

- Before starting the importation, make a backup file of all the transceiver’s data onto your PC to prevent data loss.

### 2. Repeater list import

① Select the “Repeater List” folder or each repeater group on the tree view screen of the CS-31.

② Click “Import” in the [File] menu, and then click “All...”.

- The repeater information in a CSV file will be imported, and sorted into all groups, according to the group number.

**NOTE:** When “Group...” is selected, all repeater information in the file will be imported into the repeater group selected in step ①.

If you select the “Repeater List” folder in step ①, “Group...” is not displayed.

③ The [Open] screen appears.

Select the CSV file, saved in “Latest settings file and repeater list downloading” described on page 7, and then click [Open].

④ The “Import from the file” dialog appears, and then click [OK].

- If [Cancel] is selected, the importing will be cancelled.

⑤ The “Keep ‘USE(FROM)’ setting in Repeater List?” dialog box appears, and then click [Yes] or [No] to start importing.

- Yes** : If the repeater call sign in your original repeater group is in the CSV file format, the original “USE(FROM)” settings will be kept when importing.
- No** : Even if the repeater call sign in your original repeater group is in the CSV file format, the original “USE(FROM)” setting will be replaced when importing.

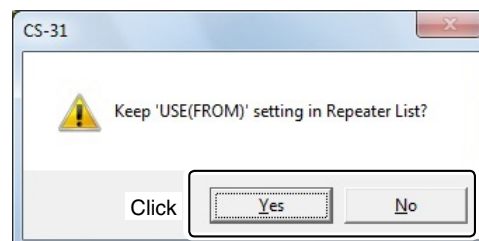
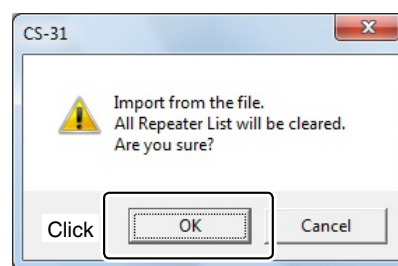
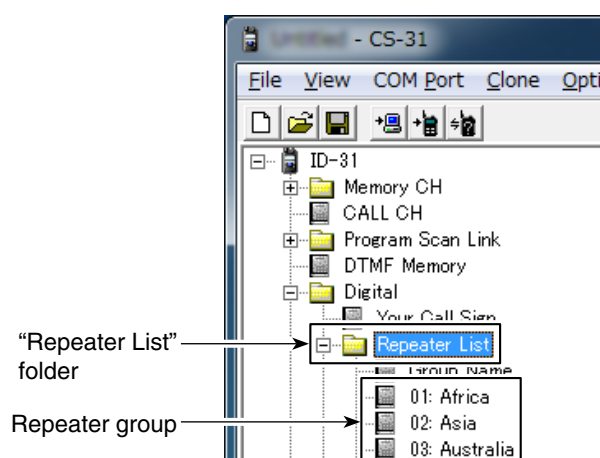
⑥ The repeater information of the repeater list is read to the CS-31.

- Import is complete.

See page 6 of this manual for details about how to write the imported repeater list to the transceiver.

See page 9 of this manual for details about how to program or export the repeater list.

<Tree view screen of the CS-31>



# Programming and Exporting the repeater list in a CSV format file

Please read this section before programming and exporting the repeater list in a Comma Separated Values (CSV) format file.

## 1. Programming the Repeater list

- ① Select the desired repeater group in the “Repeater List” folder on the tree view screen of the CS-31.
- ② Program each item of the repeater list.
  - See the Help file of the cloning software for assistance.

## 2. Exporting the Repeater list

- ① Select the “Repeater List” folder or each repeater group on the tree view screen of the CS-31.
- ② Click “Export” in the [File] menu, and then click “Group...” or “All...”.

/// **NOTE:** If you select the “Repeater List” folder in step ①, “Group...” is not displayed.

- **Group...** : Exports repeater information programmed in only the selected group only.
  - **All...** : Exports repeater information programmed in all groups.
- ③ When the “Save as” window appears, save the data, programmed in the [1. Programming the Repeater list] as described above, in a CSV format using a individual file name. Then save it in a CSV format file to a folder on your PC, and the exportation is completed.

