

ID-5100A/ID-5100E

Firmware update instructions

■ General

The ID-5100A/E's firmware can be updated, if desired. Updating the firmware adds new functions and improves performance.

/// **NOTE:** The descriptions in this guide are based on Windows 8.

◇ **System requirement**

One of the following operating systems and other items are required.

• **Operating System (OS)**

Microsoft® Windows® 8.1 (32/64 bit)
Microsoft® Windows® 8 (32/64 bit)
(Except for Microsoft® Windows® RT)
Microsoft® Windows® 7 (32/64 bit)
Microsoft® Windows Vista® (32/64 bit)

• **Others**

Data communication cable + USB port

OPC-2218LU (USB type: purchase separately)
A USB 1.1 or 2.0 port

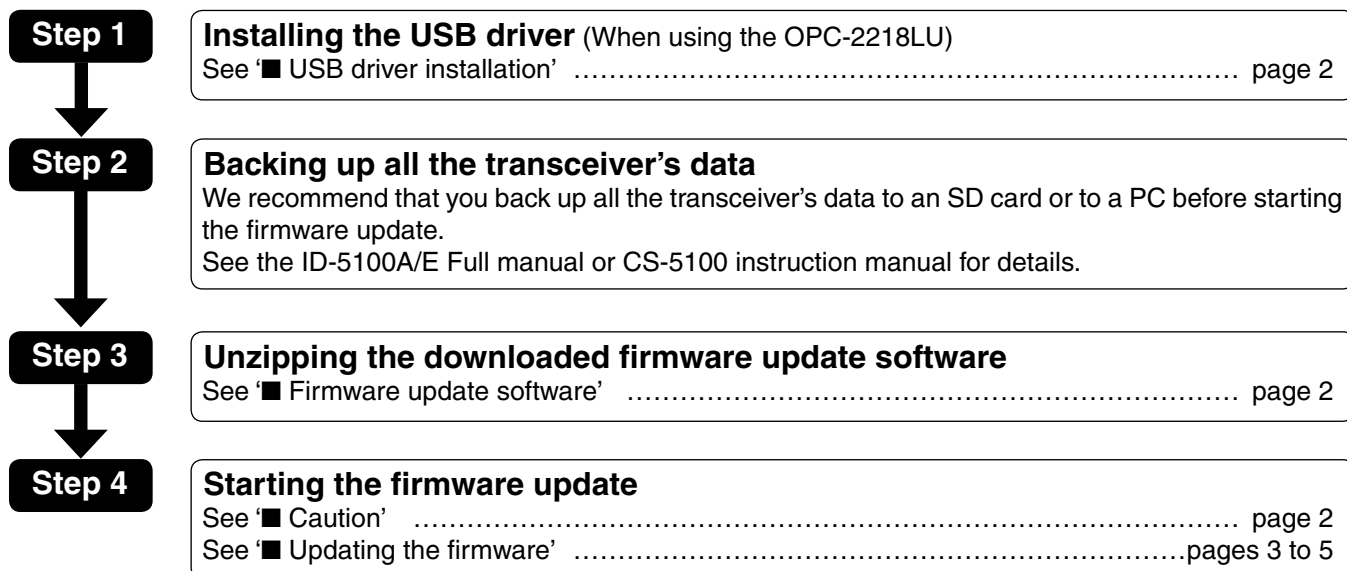
Data communication cable + RS-232C port

OPC-1529R (RS-232C type: purchase separately)
An RS-232C port

■ Procedures

These instructions describe the firmware update procedures assuming that the update software has already been downloaded from the Icom website ([Support]→“Firmware Updates/Software Downloads”)*.

*The location may be changed without notice.



Icom, Icom Inc. and the Icom logo are registered trademarks of Icom Incorporated (Japan) in Japan, the United States, the United Kingdom, Germany, France, Spain, Russia and/or other countries.
Microsoft, Windows and Windows Vista are registered trademarks of Microsoft Corporation in the United States and/or other countries.
All other products or brands are registered trademarks or trademarks of their respective holders.

■ Installing the USB driver

(When using the OPC-2218LU)

CAUTION:

- **NEVER** connect the transceiver to the PC with the OPC-2218LU DATA COMMUNICATION CABLE until the USB driver installation has been completed.
- The driver is not supported by the Windows® automatic recognition system.

To use the OPC-2218LU, you must first install a USB driver.

You can download the latest driver and installation guide from the Icom website:

<http://www.icom.co.jp/world/index.html>

Read the installation guide before installing the driver.

■ Firmware update software

Unzip the “5100_firmap_release_e*.zip” that you downloaded from Icom website.

The “5100_fu_release_e*.exe” file will be created.

- “*” stands for the release number.

■ Caution

NEVER turn OFF the transceiver power while updating the firmware.

If you turn OFF the transceiver power, or if a power failure occurs while updating, the transceiver’s firmware will be lost or corrupted. In that case, try to rewrite the firmware referring the ‘■ Update failure’ on page 7. If the transceiver’s firmware is still corrupted, you will have to send the transceiver back to the nearest Icom distributor for repair. This type of repair is out of warranty, even if the warranty period is still valid.

✓ **Recommendation!**

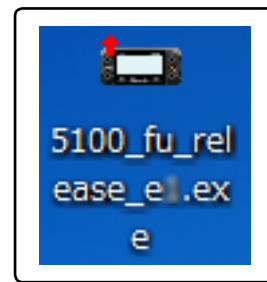
We recommend that you backup all the transceiver’s data to an SD card or to a PC before starting the firmware update.

Settings and/or memory contents will be lost or returned to their default settings when the firmware is updated.

■ Updating the firmware

/// Make sure Windows has completed its start-up, and no other applications are running.

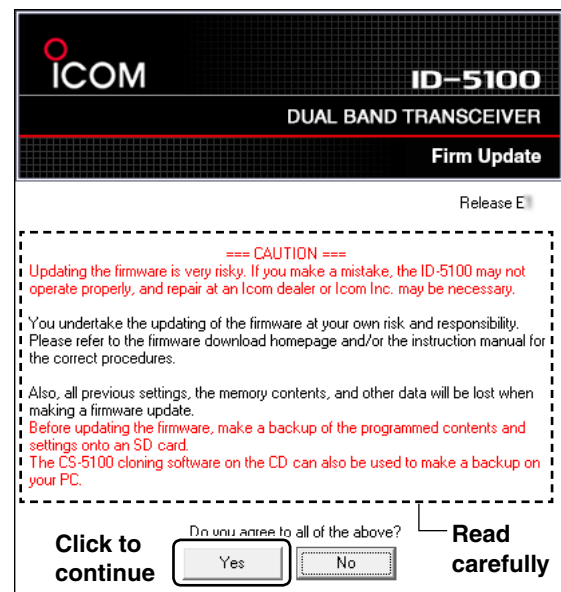
- ① Double-click “5100_fu_release_e*.exe” to start the ID-5100 Firmware update software.
 - “*” stands for the release number.
 - The message screen appears as shown in the lower right.



Double-click



- ② Carefully read the caution in the window. If you agree, click [Yes] to continue the firmware update.

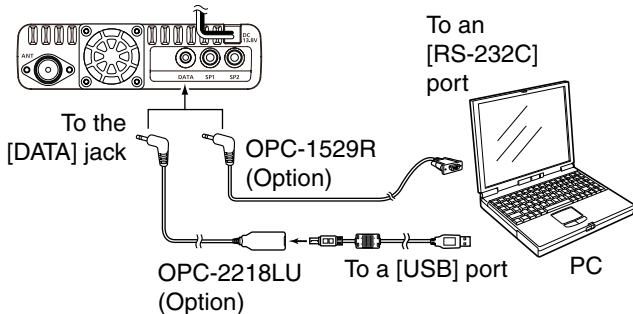


☞ Continued on the next page.

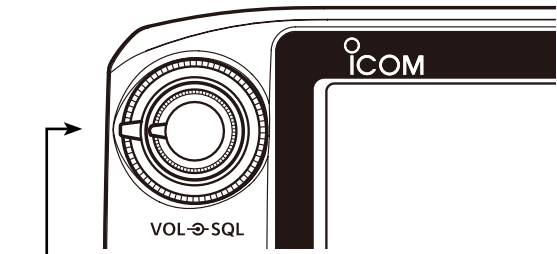
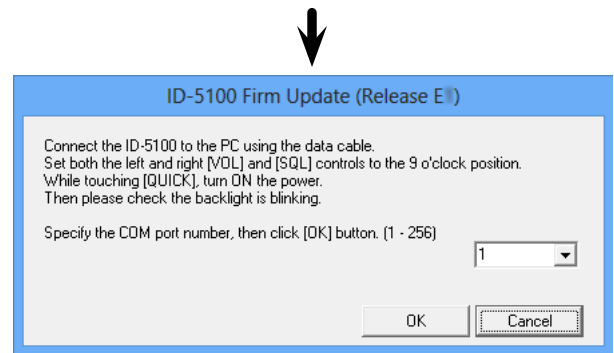
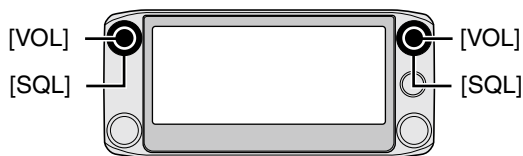
■ Updating the firmware (Continued)

③ The window to the right appears.

First, turn OFF the transceiver power, and then connect either the OPC-2218LU (USB type) or the OPC-1529R (RS-232C type) DATA COMMUNICATION CABLE between the transceiver and the PC, as shown below.



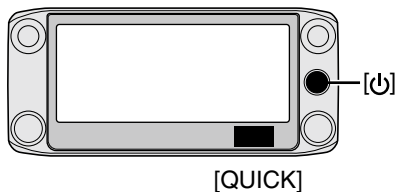
④ Set the [VOL] and [SQL] on both sides of the transceiver to the 9 o'clock position.



[VOL] and [SQL] are set to the 9 o'clock position

⑤ While touching [QUICK], hold down [⏻] to turn ON the power.

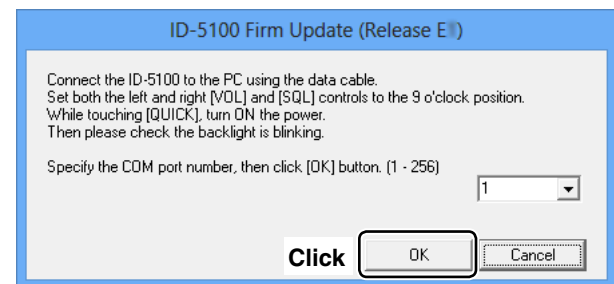
- The transceiver enters the Firmware update mode, and the backlight starts blinking.



Firmware update mode display

⑥ Click [OK] in the window, as shown to the right.

- If the "No answer from the ID-5100" dialogue box appears, see ■ If "No answer from the ID-5100" appears' on page 6 for details.

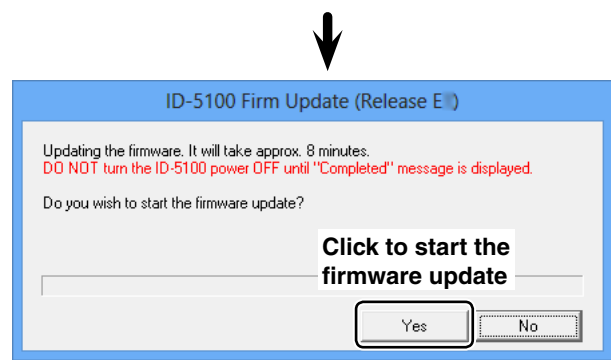


☞ Continued on the next page.

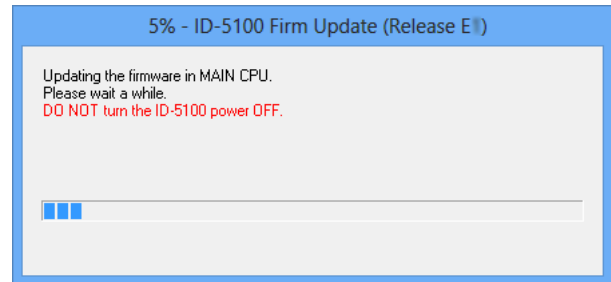
■ Updating the firmware (Continued)

- ⑦ The window to the right appears.
Click [Yes] if you want to start the firmware update.

⚠ **WARNING! NEVER** turn OFF the transceiver power or disconnect the cable at this stage.
The transceiver firmware will be corrupted.



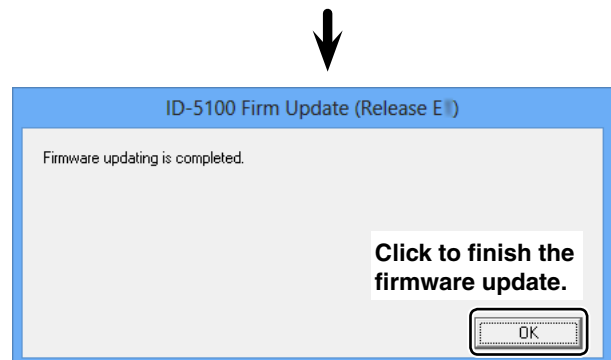
- ⑧ The window shows the firmware updating.



MAIN CPU firmware update window

⚠ Depending on the firmware, the number of windows that sequentially appear may differ.

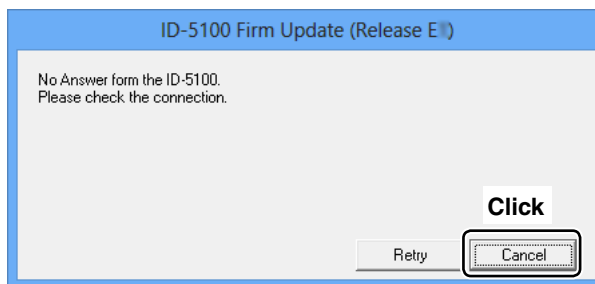
- ⑨ The window to the right appears.
Click [OK] to finish the update.
• The transceiver automatically reboots. After turning OFF the transceiver, disconnect the data communication cable.



■ If “No answer from the ID-5100” appears

If the screen as shown to the right appears, click [Cancel] to cancel the firmware update software. Then, check the following, and repeat step ① on page 3 of these instructions.

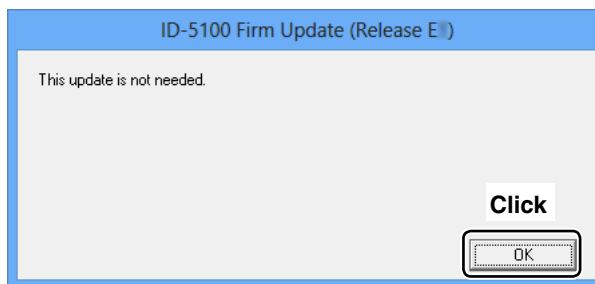
- The USB driver is not correctly installed.
- The transceiver does not enter the firmware update mode.
- A data communication cable is not correctly connected between the transceiver and the PC.



■ If the transceiver is already updated

If the screen appears as shown to the right, click [OK] to cancel the firmware update software.

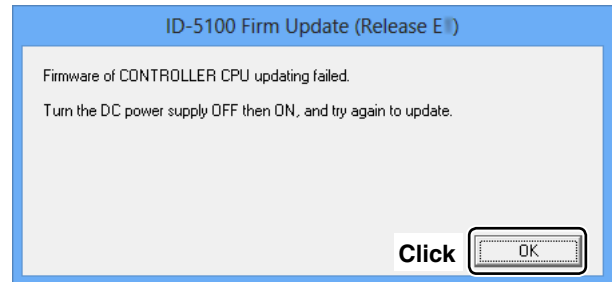
- The transceiver exits the firmware update mode, and then automatically reboots. After turning OFF the transceiver, disconnect the data communication cable.



■ Update failure

• CPU update failure

- ① If a power failure or loose cable connection occurs while updating the CPU firmware, one of the windows to the right appears.
- ② Turn OFF the DC power supply of the transceiver, and then turn it ON again.
 - The transceiver automatically turns ON with a blank display, and the backlight blinks. (firmware update mode)
- ③ Click [OK] to finish the firmware update, then restart the ID-5100 Firmware update software again.
- ④ Repeat “■ Firmware update” on pages 3 to 5.
 - Follow the procedures from step ①.
 - The data communication cable is already connected, so skip the cable connection in step ③.
 - The transceiver is already powered ON and is in the Firmware update mode, so skip steps ④ and ⑤.



• DSP update failure

- ① If a power failure or loose cable connection occurs while updating the DSP firmware, the window to the right appears.
- ② Turn OFF the DC power supply to the transceiver, and then turn it ON again.
- ③ Hold down [⏻] for 1 second to turn OFF the power.
- ④ Click [OK] to finish the firmware update, then restart the ID-5100 Firmware update software again.
- ⑤ Repeat “■ Firmware update” on pages 3 to 5.
 - Follow the procedures from step ①.
 - The data communication cable is already connected, so skip the cable connection in step ③.

